



# Fitting Instructions

TOWBAR  
For Citroen C4 5 DOOR

**C36AU**  
for  
**C36A &**  
**C36AQ**

## MATERIALS

A	1	Cross Bar
B	1	Bracket
C	4	Spacer
D	1	Bracket
E	1	Electrical Plate Bracket (ZEQ1)
F	1	Electrical Plate (ZEP1)
G	4	M10 Nuts, Lock Washers and Flat Washers (25mm O.D.)
H	4	M8 x 50 x 1.25 pitch bolts, Lock Washers, 5 Flat Washers (20mm O.D.) and 1 M8 Nut
J	4	M10 x 30 x 1.5 pitch bolts, Nuts, Lock Washers
K	1	M12 x 25 x 1.75 pitch bolt, Nut, Lock Washer, Flat Washer

## For use with either

**C36AU Flange neck option – ZF3012A.** Note: This towbar must be used with either a Witter Towball (part number Z11) or Class A50-1 or A50-X towball dimensionally Conforming to A50-1 with a 'D' and 'S' value greater than or equal to that of the towbar.

**C36AQ Detachable neck option – ZQ3012.** Please refer to ZQ fitting instructions for installation

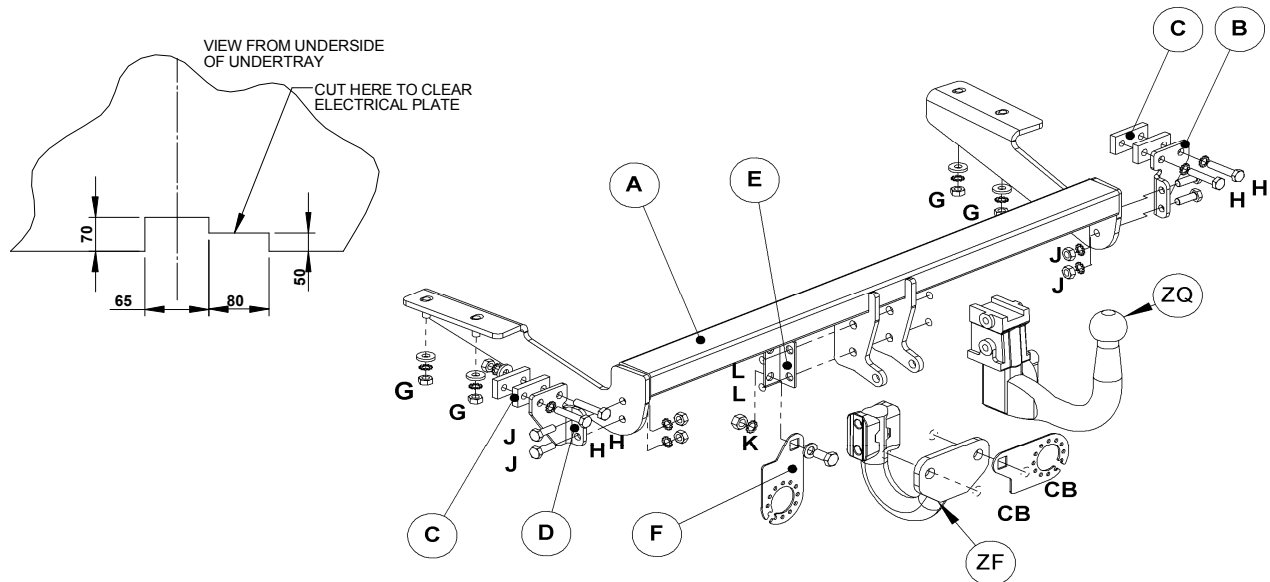
## FITTING

1. Remove bumper, (1 tip screw each side, 2 plastic clips securing bottom edge, pull ends out and rearwards).
2. Remove bottom four M10 bolts securing each end of the bumper beam to the vehicle. (2 bolts each end)
3. Remove towing eyes from each chassis rail and lower exhaust silencer by detaching supporting rubbers.
4. Locate crossbar (A) over towing eye mounting studs on each chassis rail and secure using fasteners (G)
5. Assemble Spacers (C) and Brackets (B and D) over lower holes in bumper beam using fasteners (H)
6. Secure Brackets (B and D) to Crossbar (A) using fasteners (J). **Fully tighten all bolts.**
7. Attach preferred neck and Bracket (E) to Crossbar (A) using neck fasteners.
8. Secure Electrical Plate (F) to Bracket (E) using neck fasteners, or alternatively to Neck (ZF) when fitting towball with fasteners. **Fully tighten all bolts to recommended torque and refit bumper**
9. If the vehicle is a coupe, cut under tray as shown below, and refit to vehicle.

**Note:** This towbar must be used with either a Witter Towball (part number Z11) or Class A50-1 or A50-X towball dimensionally Conforming to A50-1 with a 'D' and 'S' value greater than or equal to that of the towbar. (See alternatives C36S and C36Q)

Please refer to the vehicle specification for the trailer weight and nose limits, which **must be observed**

**Recommended torque settings:** Grade 8.8 bolts: M8 - 27Nm, M10 - 53 Nm, M12 - 95 Nm, M14 - 150 Nm, M16 - 214 Nm  
**Grade 10.9:** M12 - 139Nm, M10 - 78Nm



W0001C36AU-FIT\$010809160000