



Fitting Instructions

TOWBAR **CL104AU**
for **CL104 & CL104Q**
For Mitsubishi Lancer Sportback 2008-

MATERIALS

A	1	Cross Bar
D	1	Left hand sidearm
E	1	Right hand sidearm
F	2	Angle Cleat
G	4	M10 x 1.5 x 110mm Bolts and Nyloc Nuts with 4 Flat Washers (25mm OD)
H	8	M10 x 1.25 x 40mm Bolts, Lock Washers and Flat Washers (25mm OD)
J	4	M12 x 1.75 x 35mm Bolts, Nyloc Nuts and Flat Washers (30mm OD)
K	4	M12 x 1.75 x 35mm Bolts and Nyloc Nuts
	1	ball cover
EP	1	Flip up electrical plate kit (Detachable option only)
ZEQ5	1	Angle cleat (Detachable option only)

For use with either

CL104 Flange neck option – ZF2032. **Note:** This towbar must be used with either a Witter Towball (part number Z11) or Class A50-1 or A50-X towball dimensionally Conforming to A50-1 with a 'D' and 'S' value greater than or equal to that of the towbar.

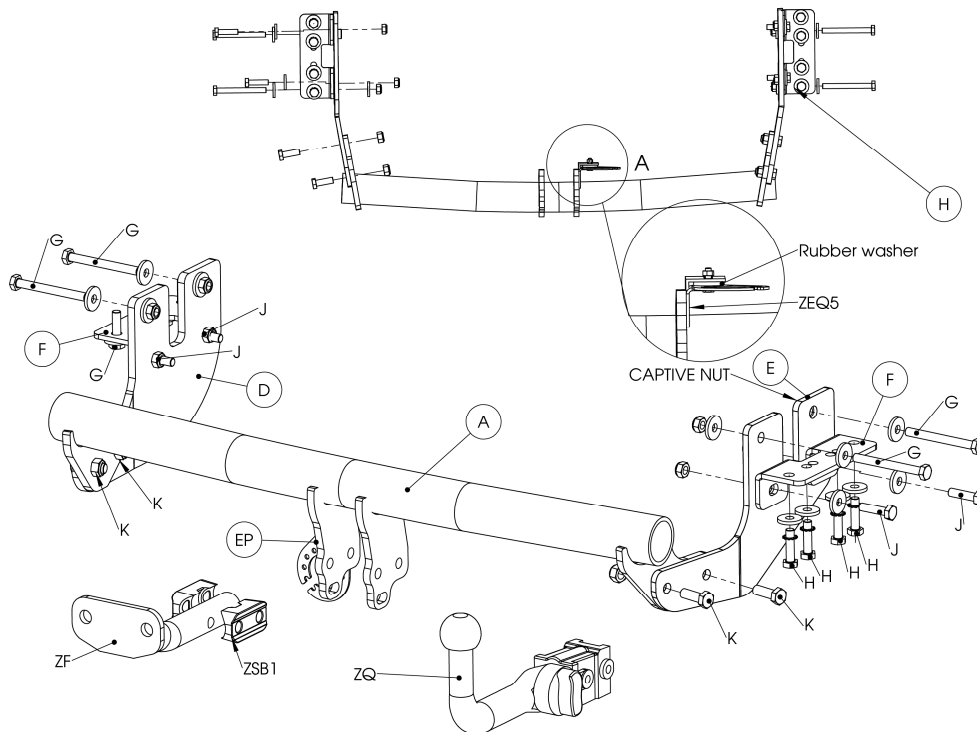
CL104Q Detachable neck option – ZQ2032. Please refer to ZQ fitting instructions for installation

FITTING

1. Release the 2 clips along lower edge of the bumper. Unclip wiring loom for number plate lights (1 clip near rear panel).
2. Loosely attach Angle Cleats (F) to vehicle chassis using Bolts (H) with Flat Washers. **Very loosely** attach Sidearms (D) and (E) using Bolts (G) with Flat Washers to vehicle chassis.
3. Insert Cross Bar (A) inside Bumper (taking care not to trap number plate wiring loom) and attach to Sidearms (D) and (E) using Bolts (K). Attach Sidearms (D) and (E) to Angle Cleats (F) using Bolts (J).
4. Attach Neck option.
5. Fully Tighten Bolts. (Note: the height of the towball can be varied by +/-20mm by moving Crossbar (A) up or down before tightening Bolts (K) and (L).
6. Refit lower clips of bumper and reconnect number plate wiring loom.

Please refer to the vehicle specification for the trailer weight and nose limits, which **must be observed**.

Recommended torque settings: M10 - 53 Nm, M12 - 95 Nm, M16 - 214 Nm



W0001CL104AU-FIT\$010802220000