



Fitting Instructions

TOWBAR For FORD MONDEO ESTATE (2001-) F104AU For F104A F104AQ

MATERIALS

A	1	Cross Bar
D	6	M10 x 130 x 1.5mm Bolts, Nuts, Lock Washers and Flat Washers (40mm O.D.)
D1	6	Bushes (17mm O.D. – 94mm long)
E	2	Side Arms
F	6	M10 x 30 x 1.5mm Bolts, Nuts and Lock Washers
F1	1	M10 x 90 x 1.5mm Bolt, Nyloc Nut and 2 Flat Washers (30mm O.D.) –vehicles with right hand exhaust.
G	1	Safety Chain Plate
EP	1	Electrical plate (Z99) and Angle Bracket (ZEQ5)

FITTING

1. Remove lower bumper fixings and cut bumper as shown below. Temporarily lower the exhaust and remove the heat shield for access. Locate the six holes provided in the frame for Bolts (D) and remove mastic compound to ensure correct seating. Insert Bushes (D1) into the frame (using Bolts (D) as a guide) and ensure that they move across the 'keyhole' to grip the frame correctly. Loosely attach Side Arms (E). **(Note: On vehicles fitted with right hand exhaust, drill out 3 rivets holding right hand exhaust hanger and remove).**
2. Slide Cross Bar (A) up into bumper and loosely attach to Side Arms (E) using Bolts (F). **(Note: On vehicles with right hand exhaust use Bolt (F1) in place of lower right hand Bolt (F) and assemble as shown below, tighten normal nut before hanging exhaust rubber on bolt then tighten nyloc nut until the washers are touching the rubber).** Tighten all bolts.
3. Re-fit heat shield, exhaust and bumper fixings.
4. Attach chosen Neck (ZF or ZQ), Electrical Plate (EP) and Safety Chain Plate (G) to Cross Bar (A).
5. **Fully Tighten all Bolts.**

For use with either

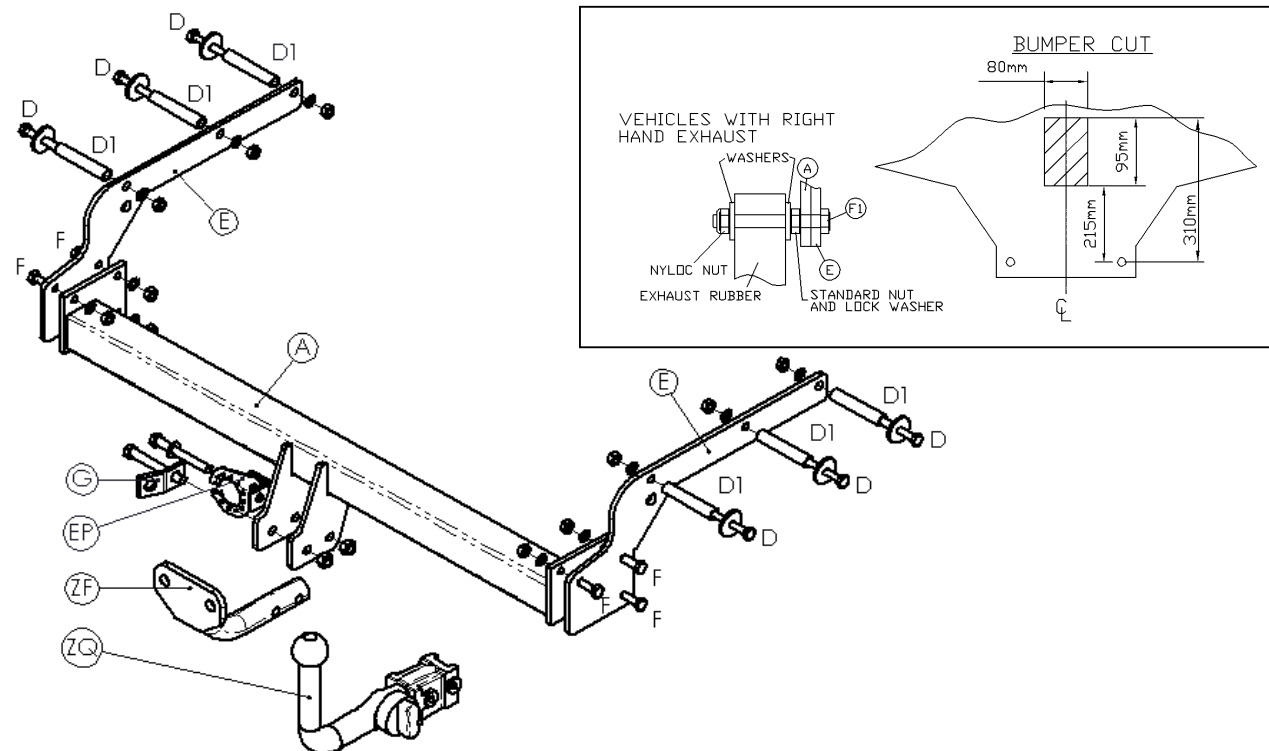
F104A Flange neck option – ZF2030B. **Note:** This towbar must be used with either a Witter Towball (part number Z11) or Class A50-1 or A50-X towball dimensionally Conforming to A50-1 with a 'D' and 'S' value greater than or equal to that of the towbar.

F104AQ Detachable neck option – ZQ2030. Please refer to ZQ fitting instructions for installation

Please refer to the vehicle specification for the trailer weight and nose limits, which **must be observed.**

Recommended torque settings: M8 - 27Nm, M10 - 53 Nm, M12 - 95 Nm, M14 - 150 Nm, M16 - 214 Nm

Grade 10.9: M12 – 139Nm, M10 – 78Nm



W0001F104AU-FIT\$010807160000