



Fitting Instructions

TOWBAR HN60A
For Honda Civic
2006 -

MATERIALS

A	1	Cross Bar with European facing to 94/20/EC A50-1
C	1	Left Sidearm
D	1	Right Sidearm
E	1	Clamp Plate
F	4	M12 x 30 x 1.75 Bolts, Lock Washers and Flat Washers (40mm O.D)
G	4	M12 x 35 x 1.75 Bolts, Nuts, Lock Washers and Flat Washers (25mm O.D)
H	4	M8 x 25 x 1.25 Bolts, Lock Washers and Flat Washers (25mm O.D)
J	1	M14 x 50 x 2.0 Bolt, Lock Washer and 2 off Flat Washers (27mm O.D)
CB	2	M16 x 50mm Coupling Bolts, Nuts, Lock Washers
Z	1	ZEP35 Electrical plate (not shown)

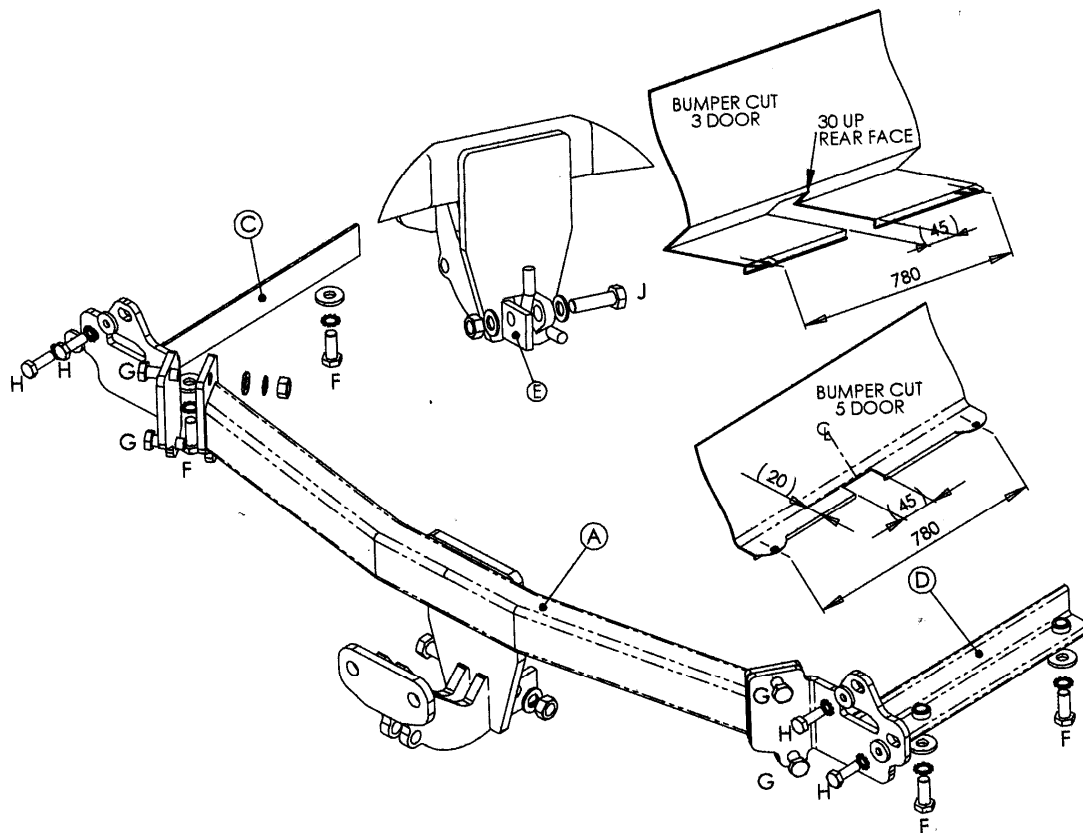
FITTING

1. Remove mud flaps (only on certain models) 1 off screw on outer edge of wheel arch, 1 off plastic push clip on inner edge of wheel arch and 1 off plastic screw on under section.
2. Remove Bumper, 6 off plastic push clips along lower edge, 2 off hex head screws under plastic covers in boot opening. Loosen outer wheel arch trims and remove 1 off plastic push clip and 1 off screw securing bumper. Pull bumper out sideways at wheel arch and then slide bumper rearwards.
3. Remove crash beam, 6 off hex head screws and slide beam upwards to release. **(Note:** Hand crash beam to final user for refitting if towing bracket is removed)
4. Loosely attach Sidearms (C&D) using fixings (F&H). Attach Crossbar (A) using fixings (G&J) with clamp plate (E) in position (as shown). **Fully Tighten all Fixings.**
5. Cut bumper as shown and refit. **(Note:** It is advisable to place some kind of packing around neck to protect bumper when refitting.

Note: This towbar must be used with either a Witter Towball (part number Z11) or Class A50-1 or A50-X towball dimensionally conforming to A50-1 with a 'D' and 'S' value greater than or equal to that of the towbar.

Please refer to the vehicle specification for the trailer weight and nose limits, which **must be observed.**

Recommended torque settings: M8 - 27Nm, M10 - 53 Nm, M12 - 95 Nm, M14 - 150 Nm, M16 - 214 Nm



W0001HN60A-FIT\$010802220000