



# Fitting Instructions

TOWBAR  
For KIA RIO 2010-

**KA26U-FIT**  
**For KA26**  
**&**  
**KA26Q**

## MATERIALS

A	1	Cross Bar with European facing to 94/20/EC A50-1
D	1	Right hand cleat
E	4	M12 x 40 x 1.25 Bolts, Lock Washers and 30mm O.D. Flat Washers
F	1	Safety Chain Plate
G	2	M10 x 40 x 1.5mm Bolts (10.9 Grade), Flat Washers, Lock Washers, and Special Nut Retainers with Square Nuts
Z	1	Electrical Plate (ZEP 2)

## For use with either

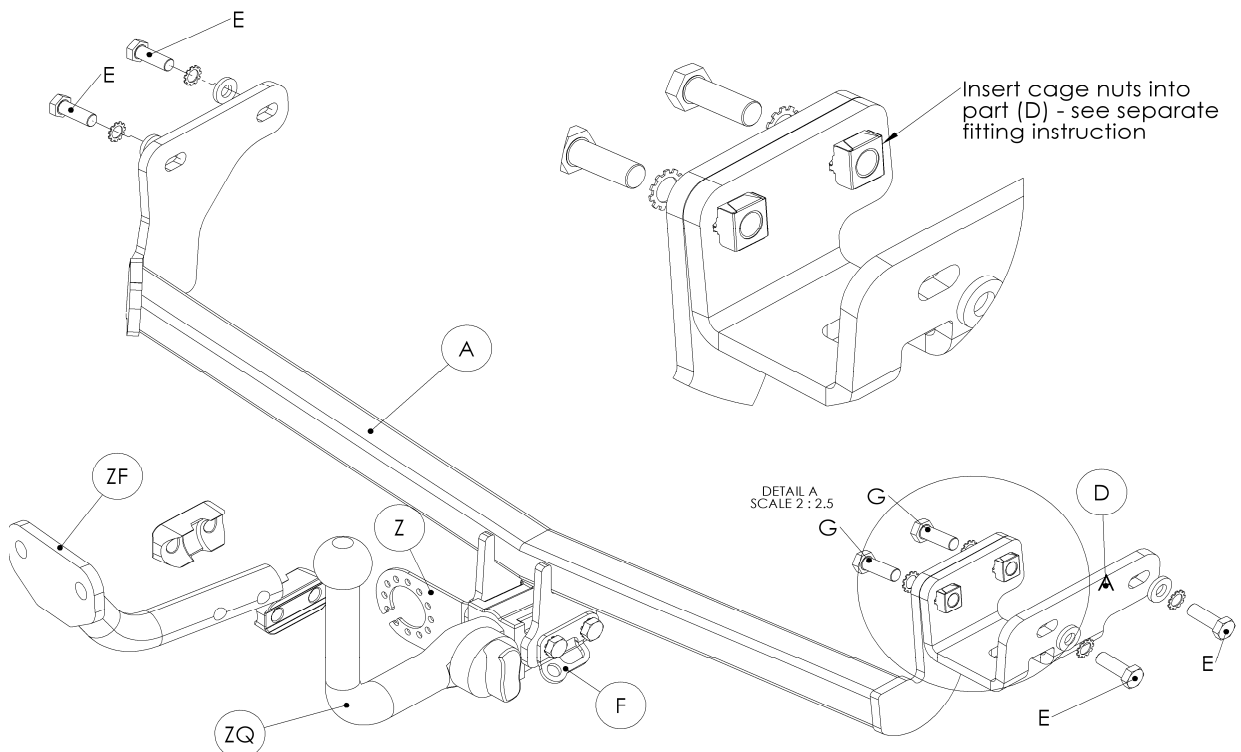
**KA26 Flange neck option – ZF2030. Note:** This towbar must be used with either a Witter Towball (part number Z11) or Class A50-1 or A50-X towball, which dimensionally conforms to A50-1 with a 'D' and 'S' value greater than or equal to that of the towbar.

**KA26Q Detachable neck option – ZQ2030.** Please refer to ZQ fitting instructions for installation

## FITTING

1. Release rearmost exhaust hanger to lower exhaust, remove clips along bottom edge of bumper.
2. Assemble Special Cage Nuts as shown (PAGE 2) and insert into special holes of Cleat (D) as shown below, Loosely attach to existing captive nuts in chassis using Bolts (E) with flat washers.
3. Insert Crossbar (A) inside lower edge of bumper and loosely secure using (Bolts (E) and Bolts (G))
4. Fully Tighten Bolts and secure exhaust and bumper.
5. Attach neck option and fit electrical plate (Z) and Safety Chain Plate (F).

**Recommended torque settings:** Grade 8.8 bolts: M8 - 24Nm, M10 - 52 Nm, M12 - 80 Nm, M14 - 130 Nm, M16 - 200 Nm  
**Grade 10.9:** M12 – 120Nm, M10 – 70Nm M8- 35Nm



W0001KA26U-FIT\$12090020000



## Special cage nut installation guide

**Caution:** The special cage nut retainers are designed to fail if over tightened, protecting threaded nut from damage.

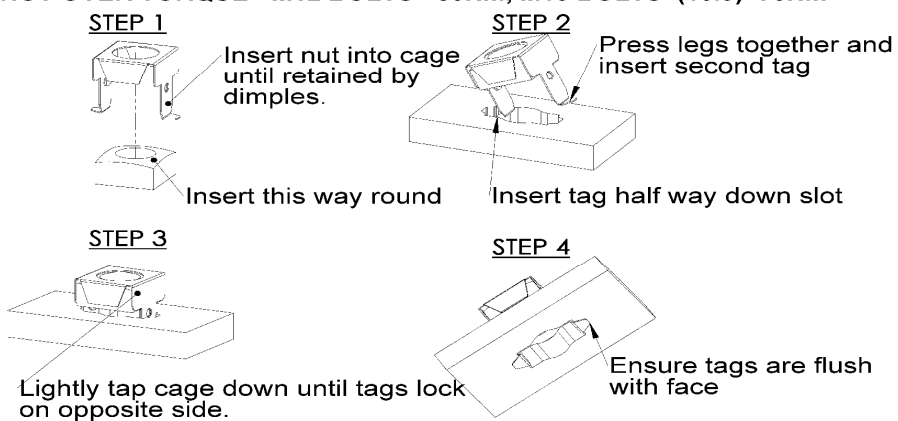
DO NOT OVER TIGHTEN –M12 BOLTS (8.8)= 80Nm, M10 BOLTS (10.9) = 70Nm.

### Inserting Caged Nut into open hole (e.g. sidearm)

**CAUTION:** The special cage nut retainers are designed to fail if over torqued, protecting threaded nut from damage.

Do not use this feature as a measure of torque, always use a torque wrench.

DO NOT OVER TORQUE - M12 BOLTS =80Nm, M10 BOLTS (10.9)=70Nm



### Inserting Caged Nut into closed hole (e.g. end of cross tube)

