



Fitting Instruction

TOWBAR LX1AU
For Lexus IS250/220d for
LX1A
LX1AQ

MATERIALS

A	1	Cross Bar
C	1	Side Bracket
D	1	Side Bracket
F	2	Bush (OD 25 x 85mm long)
G	6	M12 x 40 x 1.25 pitch Bolts and Lock Washers
H	2	M12 x 130 x 1.75 pitch Bolts, Nuts Lock Washers and Flat Washers (OD 40)
J	2	M12 x 35 x 1.75 pitch Bolts, Nuts and Lock Washers
K	2	M12 x 35 x 1.75 pitch Bolts and Lock Washers
EP	1	Electrical Plate

FITTING

Bumper Cut Note:

The bumper cut shown is the maximum cut possible without becoming visible on the main face of the bumper. When re-fitted the bumper may sit against the towbar in this area. In order to keep the bumper cut as small as possible, it may be necessary to re-drill the bumper tabs. If it is preferred not to have the bumper rest against the Towbar then the bumper cut depth should be 30mm instead of the 5mm shown below.

1. Remove bumper (Loosen wheel arch cover to give access to 2 screws on the top and bottom of each end of bumper, 2 screws in the corner of boot opening located under square plastic covers, 2 screws on bottom edge, pull ends of bumper from plastic clips and slide rearwards remove)
2. On boot floor remove the two forward luggage hooks and tape covering forward mounting point. (2 places)
3. Remove the rearmost exhaust mounting rubbers and lower the exhaust silencer(s). Undo bolts securing the rearmost aluminium exhaust hanger bracket(s) and remove.
4. Remove plastic under tray and cut as shown below.
5. Cut 75mm off forward most end of each exhaust shield and refit to vehicle using remaining location holes.
6. Insert bushes F into the base of chassis allowing bolt H to drop down and rest bush F inside the chassis.
7. Attach side arms C and D at H followed by exhaust brackets and bolts G. ensure bolts G are in correctly but remain loose. Attach cross bar A to side arms C and D using bolts J and K.
8. Assemble the chosen neck kit (ZQ or ZF) and Electrical Plate (EP) using separate fitting instructions.
9. **Fully tighten all bolts to specified torque.**
10. Cut bumper as shown below and refit along with plastic under tray.

For use with either

LX1A Flange neck option – ZF2001. *Note:* This towbar must be used with either a Witter Towball (part number Z11) or Class A50-1 or A50-X towball dimensionally Conforming to A50-1 with a 'D' and 'S' value greater than or equal to that of the towbar.

LX1AQ Detachable neck option – ZQ2001. Please refer to ZQ fitting instructions for installation

Please refer to the vehicle specification for the trailer weight and nose limits, which **must be observed**.

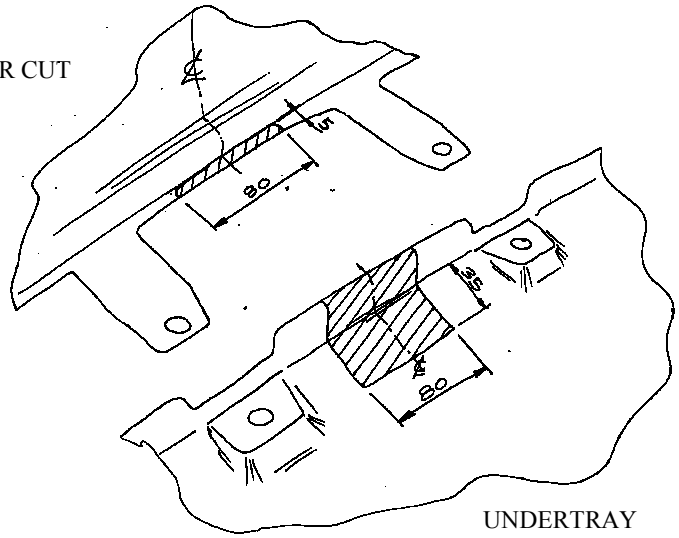
Recommended torque settings: M8 - 27Nm, M10 - 53 Nm, M12 - 95 Nm, M14 - 150 Nm, M16 - 214 Nm

Grade 10.9: M12 – 139Nm, M10 – 78Nm

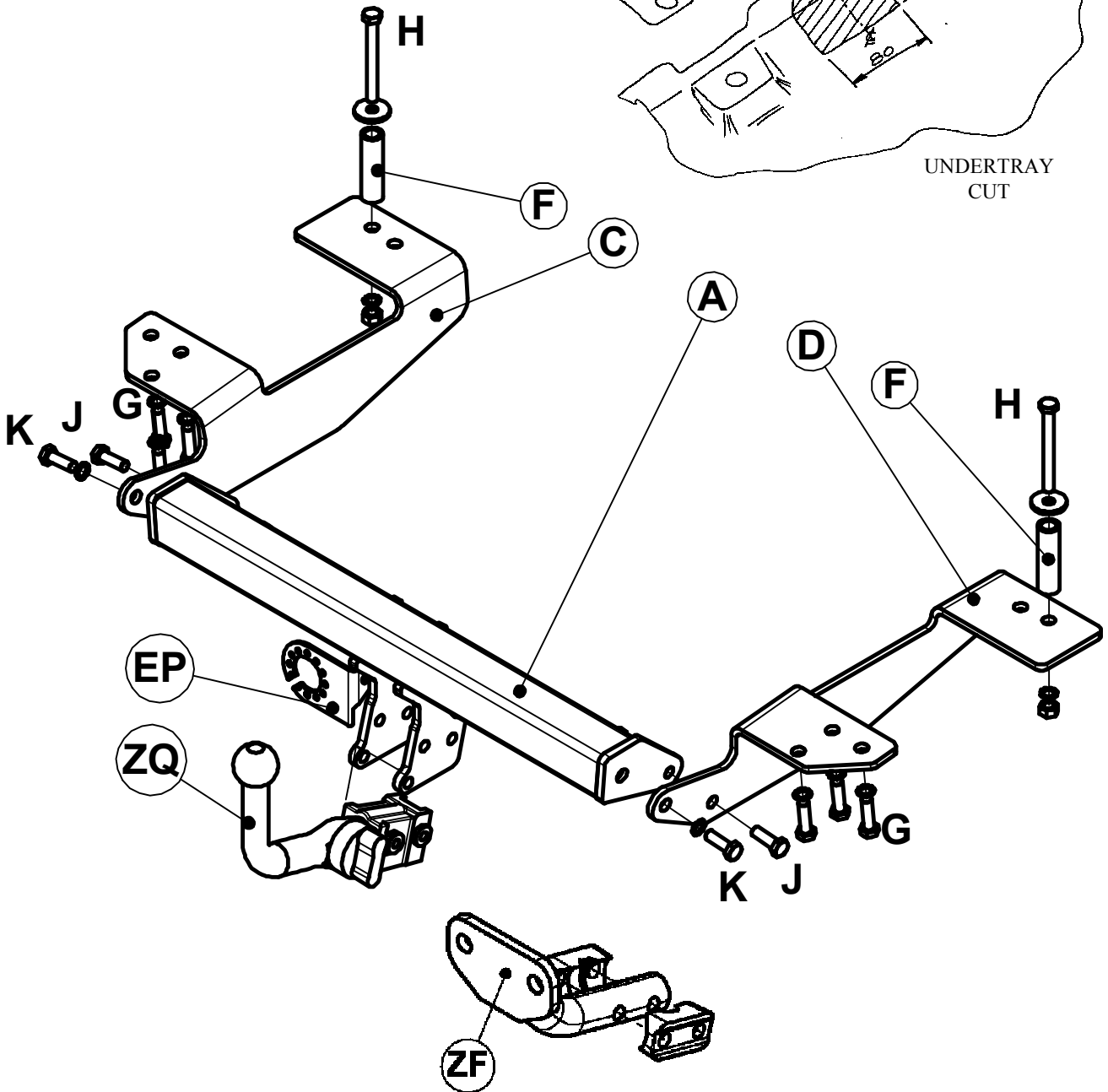


W0001LX1AU-FIT\$010909300000

BUMPER CUT



UNDERTRAY CUT



W0001LX1AU-FIT\$010909300000