



# Fitting Instructions

TOWBAR MHA2U  
For Autotrail Tribute Motorhomes  
(Ford Transit based models)

## MATERIALS

A	1	Cross Bar
B	2	Side Bracket
C	4	M12 x 35 x 1.75 Bolts, Nyloc Nuts, and Flat Washers (30mm OD.)
D	4	M12 x 100 x 1.75 Bolts, Nyloc Nuts, Flat Washers (30mm OD.) and 44mm long Plated Bush
E	6	M12 x 35 x 1.75 Bolts, and Nyloc Nuts
ZE	1	Retractable Electrical Plate
ZN	1	Neck Kit.

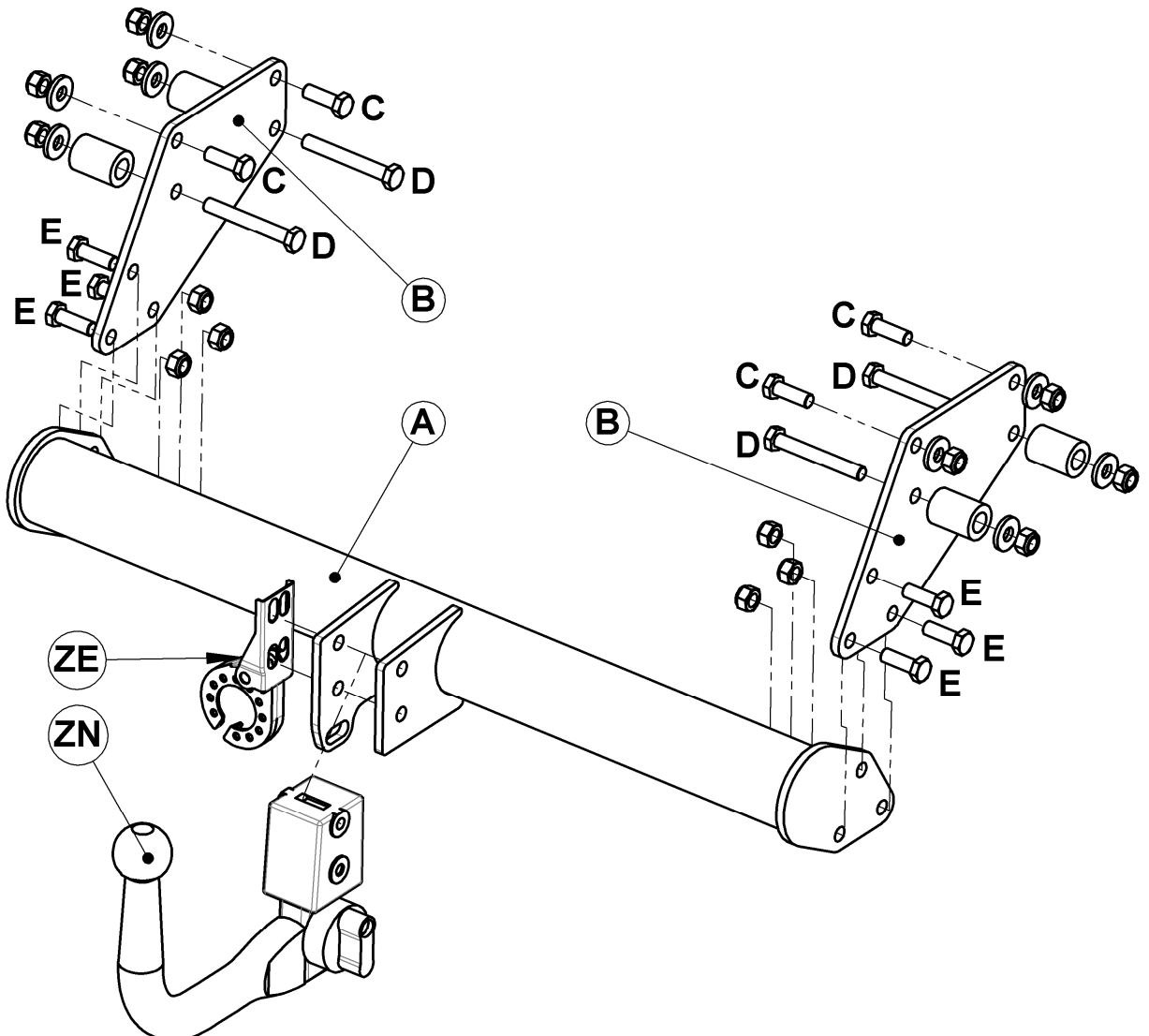
## FITTING

1. Using Side Bracket (B) as a template, locate the correct mounting points on the motorhome chassis extensions (rear-most group of 4 for LWB and forward-most group for SWB vehicles.)
2. Assemble Side Brackets (B) to the side of each chassis rail extension (Outer face, nearest vehicle centre) using fasteners (C)
3. Complete the assembly of Side Brackets (B) using fasteners (D), using Bushes as spacers between the inside faces of each chassis rail extensions.
4. Assemble Cross Bar (A) to each Side Bracket (B) using fasteners (E).
5. Assemble the chosen Neck Kit (ZN) and Electrical Plate Kit (ZE to Cross Bar (A) using fasteners and instructions from the relevant kits.
6. **Fully Tighten all Fasteners.**

## Recommended torque settings:

**Grade 8.8 bolts:** M8 - 24Nm, M10 - 52 Nm, M12 - 80 Nm, M14 - 130 Nm, M16 - 200 Nm

**Grade 10.9:** M12 - 120Nm, M10 - 70Nm M8- 35Nm



W0001MHA2U-FIT\$011309220000