



Fitting Instructions

TOWBAR FOR:

APACHE 632
APACHE 634
APACHE 700

MHA6U

MATERIALS:

A	1	Crossbar
B	16	M12 x 35 x 1.75 Bolts and Serrated Nuts
C	6	M10 x 40 x 1.5 Bolts and Serrated Nuts
D	2	Sidearm
E	2	Sidearm Braces
F	1	Chassis Support Arms (Right Hand)
G	1	Chassis Support Arms (Left Hand)
H	2	Angle Bracket
J	2	M12 x 140 x 1.75 bolts, Serrated Nuts and 6 Flat Washers (50mm)
Z50	1	Electric Plate
ZQ	1	Chosen Neck (Detachable Shown)

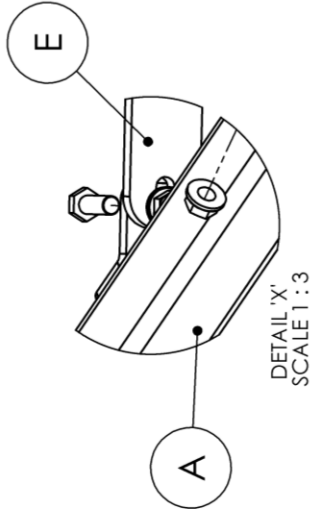
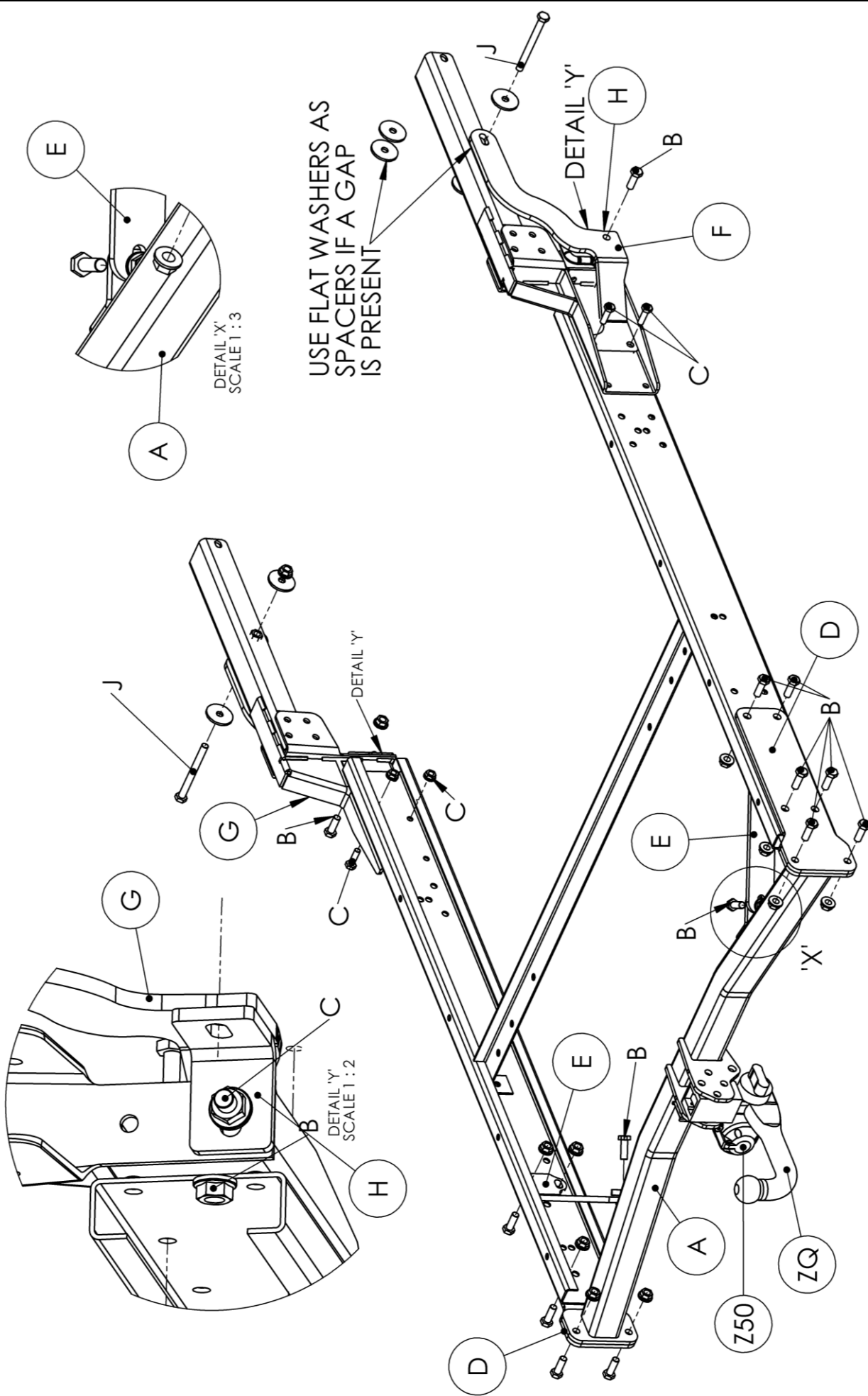
FITTING:

1. Where fitted remove the rear cross member, rear brace and corner steadies & discard.
2. Loosely attach Sidearms (D) and Sidearm Braces to existing holes in chassis using Bolts (B).

Note: on vehicles with body supports mounted to sides of chassis rail, remove the rearmost bolts and loosen the forward, this will allow spacer plates to be removed and so that Sidearm (D) can be inserted.

3. Loosely Attach Crossbar (A) to Sidearms (D) using Bolts (B) and then attach Sidearm Braces (E) to Crossbar (A), also using Bolts (B).
4. Fit Neck unit (ZQ) referring to separate fitting instruction and **Fully Tighten** all bolts (see torque setting below). Check valance clearance >5mm (**a cut may be required on certain vehicles**).
5. Remove central bolts securing chassis rails to chassis drop arms (2 x M10 bolts each side)
6. Fit Angle Cleats (H) to the existing hole in the chassis drop arms (**see detail 'Y'**). Loosely attach the Chassis Support Arms (F and G) to chassis rails using Bolts (C), to the vehicle chassis rails using Bolts (J) and Angle Cleats (H) using Bolts (B).
7. **Fully Tighten Bolts to their correct torque setting.**

Recommended torque settings: Grade 8.8 bolts: M10 - 52 Nm, M12 - 95 Nm



USE FLAT WASHERS AS SPACERS IF A GAP IS PRESENT

