

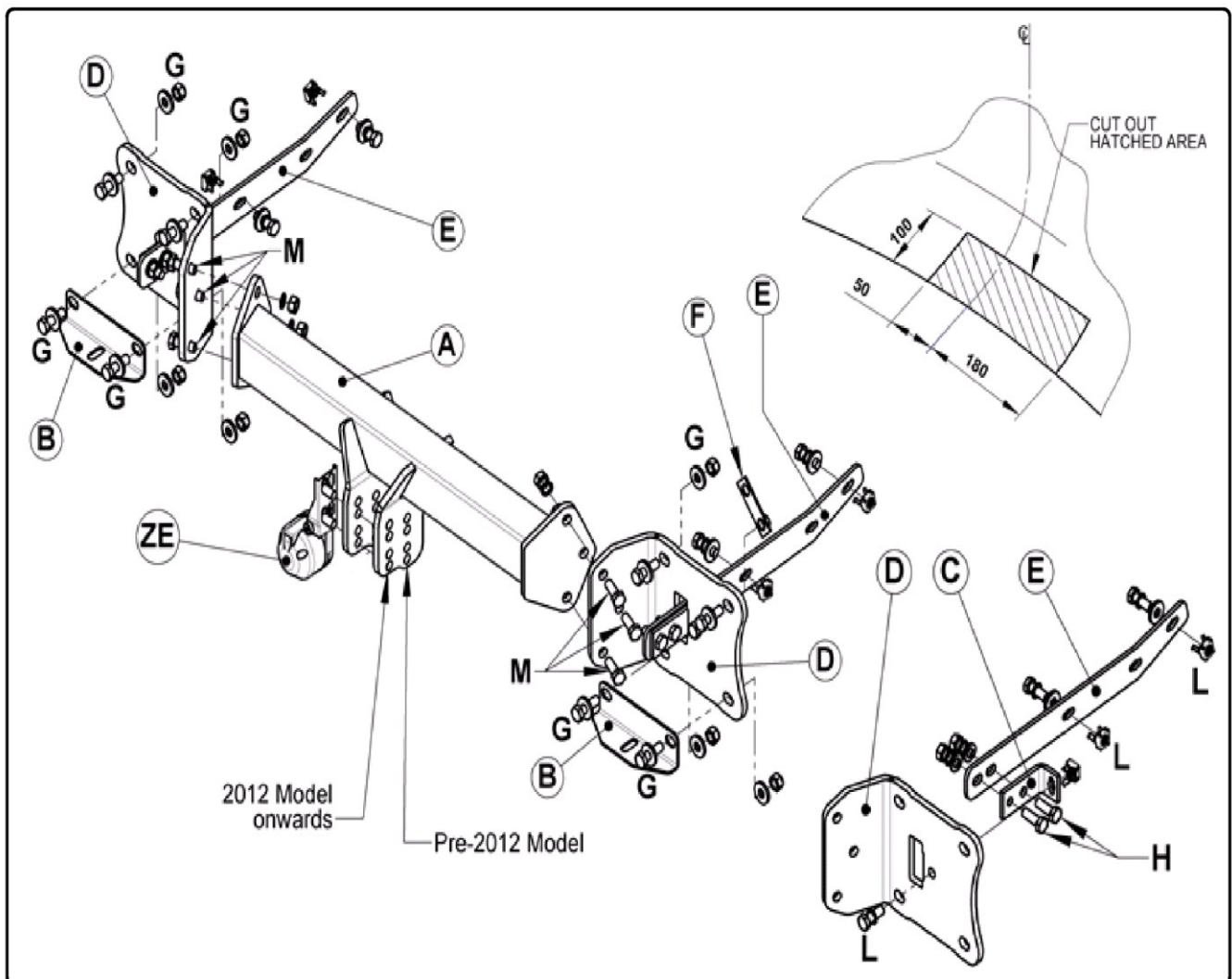
FITTING INSTRUCTIONS

Mercedes

G-Class (X164) and M-Class (W164 & W165)

Cooling system upgrade may be required - check owners manual.

TME084DT 101101



MATERIALS

A	1	Cross Bar
B	2	Support Bracket
C	2	Angle Bracket
D	2	End Bracket
E	2	Side Arm
F	1	Captive nut strap
G	8	M12 x 40 Bolts (Grade 10.9), Nyloc Nuts (10.9 Grade) and 15x Plain Washers
H	4	M12 x 40 Bolts (Grade 10.9), Nuts, Plain Washers and Lock Washers
K	2	M8 x 30 Bolts, Nyloc Nuts, and 4x Plain Washers
L	6	M12 x 40 Bolts (Grade 10.9), Lock Washers, Plain Washers, Cage Nuts and Retainers
M	6	M12 x 40 Bolts (Grade 10.9), Lock Washers, and Nuts
ZE	1	Retractable Electrical Plate Kit

FITTING PROCEDURE FOR PRE AND POST 2011 MODELS.

1. Remove luggage loops, boot floor, spare wheel, rear and side panels. Remove bumper (4 studs and 1 tip bolt each wheel arch, 1 bolt each side on rear quarter inside vehicle, 4 bolts on lower edge, 1 long nut through rear panel each side. Disconnect reversing sensors if fitted. Pull bumper rearwards and store carefully and remove bumper support.
2. On post 2011 vehicles, lower the plastic fluid tank on the offside rear and exhaust and heat shield from the nearside rear, in order to gain access to the lower crash beam nuts
3. Remove crash beam and hand to customer.
4. Ensure chassis opening gaskets are re-fitted to the rear panel, after crash beam removal.
5. Cut a vertical slot in each gasket in readiness for fitting Side Arms (E)
6. Pre-assemble Caged Nuts (L) to Side Arms (E), taking care to fit to the correct faces of each Side Arm.
7. Insert Side Arms (E) through the gaskets and into each chassis rail, loosely attaching to the side of each chassis rail using Bolts (L) Note, on earlier models the holes in the chassis rails may need enlarging slightly to ease fitment.
8. Pre-assemble remaining Caged Nuts (L) to Angle Brackets (C)
9. Assemble Brackets (C) to Brackets (D) as shown in the detail view below.
Assemble the completed Brackets (D) to the vehicle rear panel and Side Arms (E), using fasteners (G - top mountings only), (F) & (H)
Note: It is essential that the chassis openings are sealed to prevent any possible water ingress once the tow bar is fitted.
10. Loosely attach Cross Bar (A) to Brackets (D) using fasteners (M)
11. Assemble Brackets (B) to Brackets (D) using the lower fasteners (G)
12. Tighten all bolts, starting with (G) then (D) and finally (H).
13. Attach the Neck Kit and Retractable Electrical Plate kit) to Cross Bar (A) using separate instructions, and to the appropriate column of holes depending on Model type. Use the lower holes if required for self-levelling models.
14. On post 2011 models, refit the exhaust heat shield, and plastic fluid tank to Brackets (B) using existing bolts and fasteners (K) through the slotted holes in Brackets (B).
15. If a cover plate is fitted to the bumper, no cut is required, otherwise cut the bumper using the diagram below as a guide.
16. Re-fit the bumper and the interior trim.

Note: This towbar must be used with a Class A50-1 or A50-X towball, which dimensionally conforms to A50-1 with a 'D' and 'S' value greater than or equal to that of the towbar.

Recommended torque settings: Grade 8.8 bolts: M8 - 24Nm, M10 - 52 Nm, M12 - 80 Nm, M14 - 130 Nm, M16 - 200 Nm
Grade 10.9: M12 - 120Nm, M10 - 70Nm M8- 35Nm