



Fitting Instructions

For PEUGEOT 407 SW (with reversing sensors)

TOWBAR PG35BU
for PG35B & PG35BQ

MATERIALS

A	1	Cross Bar with European facing to 94/20/EC A50-1
C	1	Right Hand Side Arm
D	1	Left Hand Side Arm
E	1	M10 x 25 x 1.5 Bolt, Nut, Lock Washer and x2 Washer (20mm O.D.)
F	2	M12 x 100 x 1.75 Bolts and Nyloc Nuts (Grade 10.9 – Torque Setting 139Nm)
G	2	M12 x 40 x 1.75 Bolt, Nuts, Lock Washer and Washer (30 mm O.D.)
H	1	M10 x 30 x 1.5 Bolt, Lock Washer and Washer (25 mm O.D.)
J	6	M8 x 25 x 1.25 Bolt, Lock Washer and Washer (25 mm O.D.)
K	2	M8 x 40 x 1.25 Bolt, Lock Washer and Washer (25 mm O.D.)
L	1	M10 x 60 x 1.5 Bolt, Lock Washer and Washer (25 mm O.D.)
ZEQ1	1	Electrical plate bracket
ZEP1	1	Electrical plate

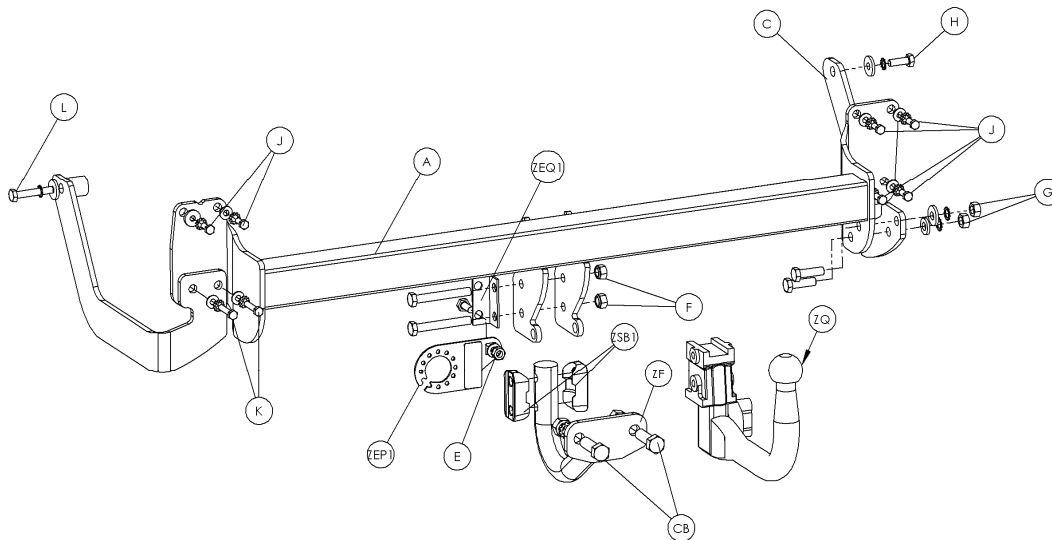
For use with either

PG35B Flange neck option – ZF3008A. Note: This towbar must be used with either a Witter Towball (part number Z11) or Class A50-1 or A50-X towball dimensionally Conforming to A50-1 with a 'D' and 'S' value greater than or equal to that of the towbar.

PG35BQ Detachable neck option – ZQ3008. Please refer to ZQ fitting instructions for installation

FITTING

1. Check to ensure that you have all the necessary parts.
2. Disconnect and remove the rear light clusters: **x1 Plastic nut behind each light cluster, access to which is achieved by unclipping the inner boot linings.**
3. Dismount the rear bumper and reversing sensors: **Remove x1 nut in each light cluster seating area, x2 torx screws under each wheel arch, x5 torx screws on the bottom edge of the bumper, x1 nut on the lower central bumper support, x2 plastic poppers in the rear panel and finally x1 bolt on each of the left and right hand upper edge of the bumper. Note, access to these x2 bolts can be found through the previously removed inner boot lining covers.** Disconnect reversing sensors.
4. Dismount the rear crash beam: **Remove the x8 bolts and hand redundant crash beam to customer.**
5. Offer up crossbar (A) to the rear panel and finger tighten using Bolts (J).
6. Locate side arms (C and D) to the existing holes in the chassis rail and finger tighten bolts (H) and (L) into the existing captive nuts. **Note: existing holes are covered with tape. Access can be improved by removing 2 M8 bolts on inner arch.**
7. Connect side arms (C and D) to cross bar (A) using fixings (G and K). **Fully tighten every fixing to recommended torque settings.** To prevent the ingress of water, ensure all fixings passing into the vehicle are sealed using a silicone sealant.
8. Reassemble the rear bumper and light clusters in the reverse order to above.
9. Attach preferred neck and Electrical Plate Bracket (ZEQ1) using fixings (F). Attach Electrical plate (ZEP1) to Bracket using fixing (E). Alternatively attach Electrical plate (ZEP1) behind the coupling bolts (CB). **Fully tighten all remaining fixings to the recommended torque setting.**



Recommended torque settings: Grade 8.8 bolts: M8 - 27Nm, M10 - 53 Nm, M12 - 95 Nm, M14 - 150 Nm, M16 - 214 Nm **Grade 10.9:** M12 – 139Nm, M10 – 78Nm



W0001PG35BU-FIT\$010808060000