



Fitting Instructions

TOWBAR PG63AU
For Peugeot 508

MATERIALS

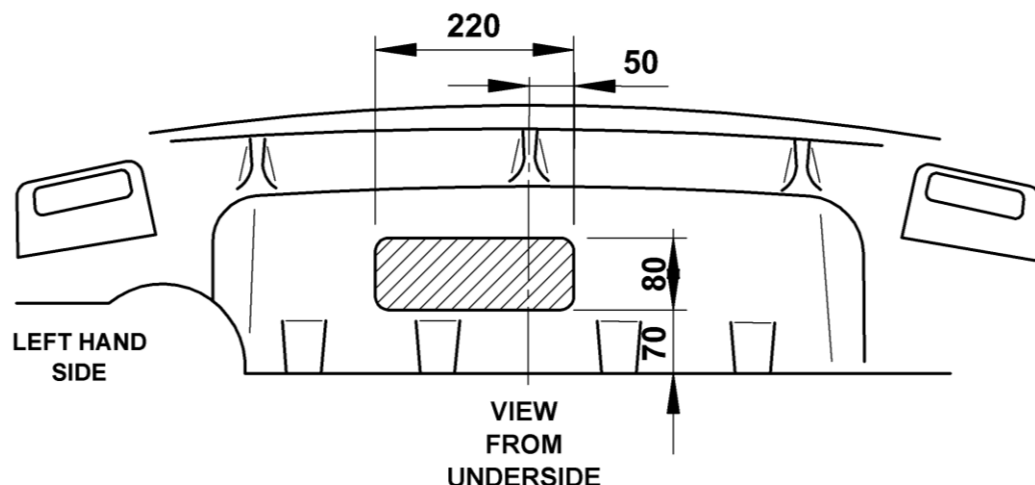
A	1	Main Crossbar.
B	1	Right Hand Sidearm.
C	1	Left Hand Sidearm
D	2	M12 x 35 x 1.75 Bolts, Dia30 Plain Washers, Lock Washer and Cage Nut.
E	2	M12 x 40 x 1.75 Bolts, and Nyloc Nuts
X	8	Existing fixings from aluminium bumper beam
ZE	1	Retractable Electrical Plate
ZN	1	Neck Kit

For use with either

Note: This tow bar must be used with either a Witter Tow ball (part number Z11) or Class A50-1 or A50-X tow ball, which dimensionally conforms to A50-1 with a 'D' and 'S' value greater than or equal to that of the tow bar.

FITTING

1. Remove bumper
2. Remove aluminium bumper beam
3. Remove the thin sealing tape covering each chassis rail mounting point (D).
4. Pre-assemble Cage Nuts (D) to each Side Arm (B & C) using separate instructions. (Note: Determine which holes to use and to which face of Side Arm to fit using main diagram below.)
5. Insert Side Arms (B & C) into each appropriate chassis rail and secure to the side of each chassis rail using remaining fasteners (D).
6. Assemble tow bar to vehicle rear panel by passing over each protruding Side Arm (B & C) and loosely secure to rear panel using the original bumper beam fasteners (X).
7. Secure the end of each Side Arm (B & C) to Cross Bar (A) using fasteners (E).
8. Assemble the chosen Neck (ZN) and Retractable Electrical Plate (ZE) to Cross Bar (A) using instructions contained within each kit.
9. **Fully tighten all fasteners**, starting with the rear panel fasteners (X)
10. Cut bumper using diagram below as a guide and refit to vehicle.



Recommended torque settings:

Grade 8.8 bolts: M8 - 24Nm, M10 - 52 Nm, M12 - 80 Nm, M14 - 130 Nm, M16 - 200 Nm

Grade 10.9: M12 - 120Nm, M10 - 70Nm M8- 35Nm

