



Fitting Instructions

Towbar for -
Renault Clio RN120U
March 2019-

MATERIALS:

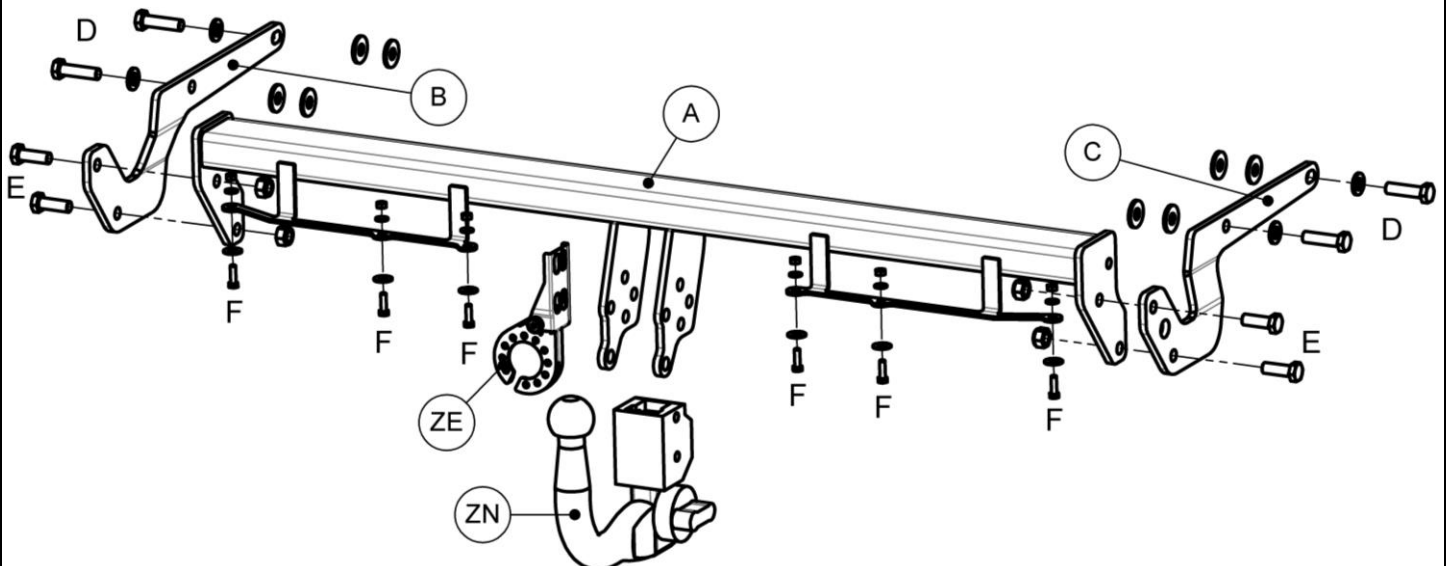
A	1	Crossbar
B	1	LH Sidearm
C	1	RH Sidearm
D	4	M12 x 45 x 1.75 Bolt (Grade 10.9), Washer & Larger Washers
E	4	M12 x 35 x 1.75 Bolt & Nyloc Nut (Grade 8.8)
F	6	M6 x 20 x 1.0 Bolt, Washer, Large Washer & Nyloc Nut (Grade 8.8)
ZE	1	Electrical Plate
ZN	1	Chosen Neck Option

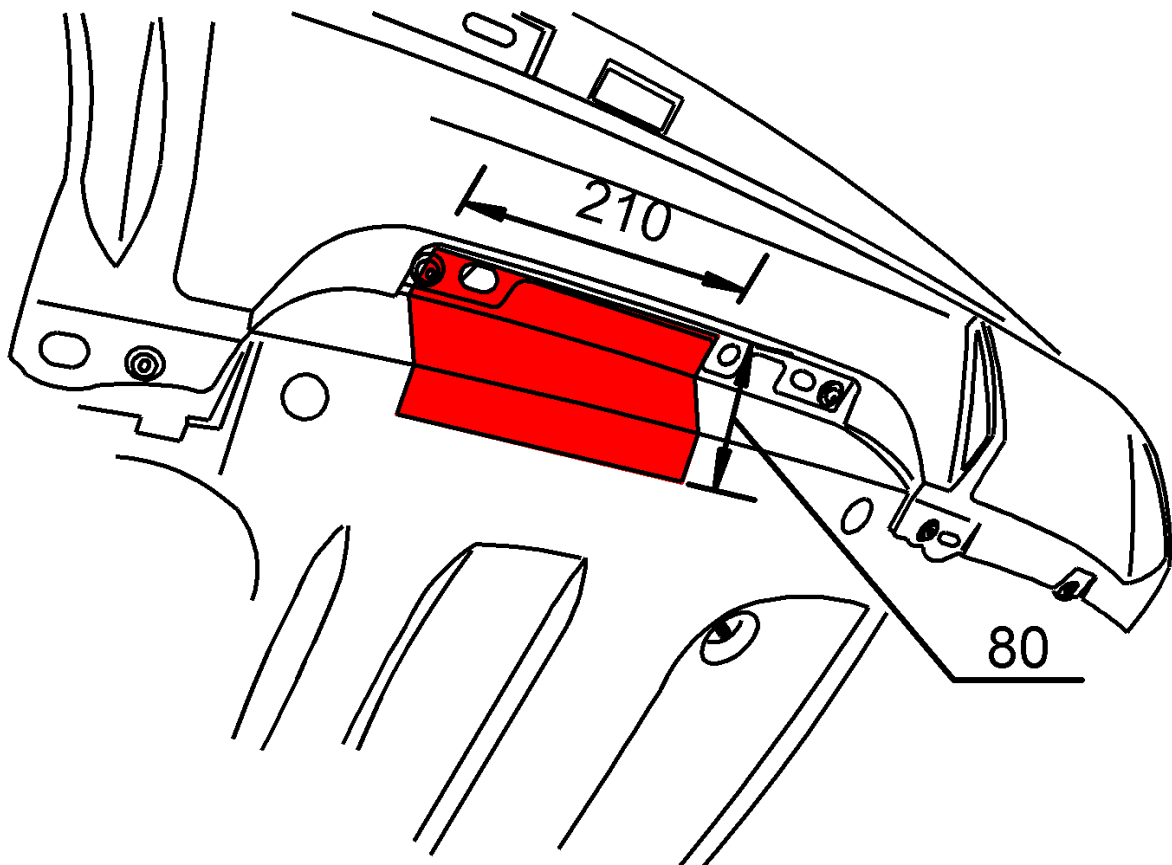
Note: This towbar must be used with either a Witter Towball (part number Z11) or Class A50-1 or A50-X towball, which dimensionally conforms to A50-1 with a 'D' and 'S' value greater than or equal to that of the towbar.

FITTING:

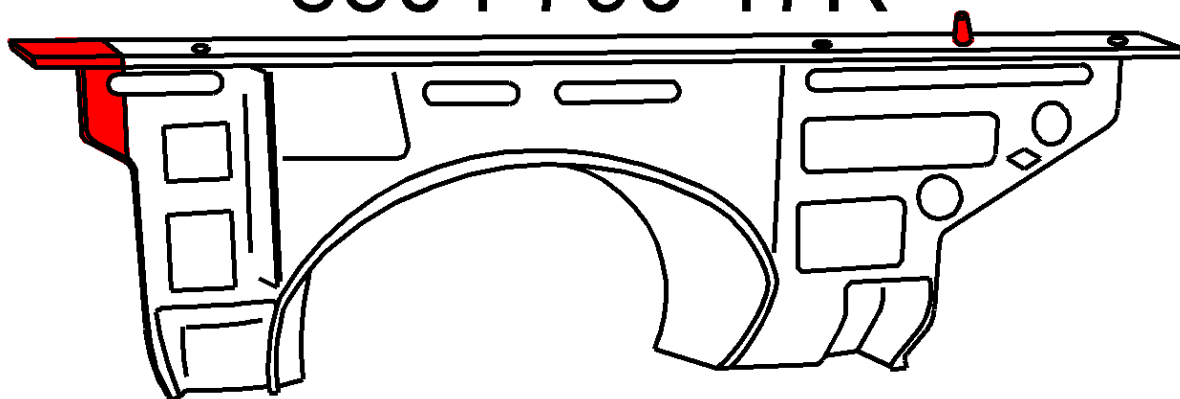
1. Remove the light clusters. Through two apertures (each side) from within the boot, unscrew two plastic handled fixings. Ease the light cluster away from the vehicle body and unclip wiring.
2. Loosening or removing the wheel-arch plastic inner linings will make fitment easier.
3. Remove the bumper. Remove the fixings exposed by removing the light clusters. Remove two fixings from within the wheel arch (one behind wheel-arch lining) and those along the bumpers edge. Remove the vehicle under tray/s. Starting at bumper tips carefully peel the bumper away from the vehicle body. Unclip any wiring attaching the bumper to the vehicle.
4. Vehicles with removable Plastic Bumper Supports – remove both plastic bumper supports from the crash beam retaining the fixings. Hand the crash beam back to the customer.
5. Vehicles with fixed Plastic Bumper Supports – remove the crash beam and fixings from the vehicle and hand back to the customer. Plastic Bumper Supports (**part numbers 850461239R & 850479017R shown overleaf**) need to be purchased from a Renault dealership for fitment to Crossbar (A).
6. Locate the two mounting points along the outer edges of the chassis rails, remove the tape covering the holes and remove any mastic obstructing fitment. Loosely attach the Sidearms (B & C) to the outer face of the chassis using fixings (D). Note the position of the larger washers against the chassis face.
7. Loosely attach the Crossbar (A) to the Sidearms using fixings (E).
8. Attach the plastic bumper supports to Crossbar (A) using fixings (F) or bolt fixings retained earlier. Note the small cuts required to the support outer edges and locating pip (on the top face) shown overleaf.
9. Align the Sidearms, Crossbar and Bumper Supports and fully tighten to their correct torque settings.
10. Cut the bumper and under tray using the diagram overleaf **as a guide**. Note the larger 210mm cut on the under tray is only needed when using the retractable Electric Plate (ZE).
11. Attach the Chosen Neck Option (ZN) and Electrical Plate (ZE).
12. Re-fit the bumper, light clusters, under trays and wheel-arch linings.

Recommended torque settings: Grade 8.8: M6 - 9Nm, M12 - 95Nm, M16 - 200Nm / **Grade 10.9:** M12 - 120Nm





8504 790 17R



8504 612 39R

