



# Fitting Instructions

SK32U

For; Skoda Karoq 2017-

## MATERIALS

A	1	Cross Bar
B	2	Sidearm
E	4	M12 x 45 x 1.75 bolts, 2 x Nyloc Nuts flat washers (40 O.D), 2 x square nuts ("T" type) and retainers.
F	4	M12 x 45 x 1.75 bolts, flat washers and Nyloc nuts.
Z51	1	Electric plate.
ZX	1	Neck kit

## FITTING

1. **Remove light clusters** – to remove the rear light clusters peel back the trim from within the boot behind the lights exposing a plastic captive fixing, un-screw fixing. Gently pull light cluster rearwards to pop it out of its guide holes. Unclip the electrical connections and safely store light cluster.
2. **Remove bumper** - to remove bumper un-clip plastic fixings and un-screw the torx screws along the bottom edge of the bumper. The black plastic clips beneath the light clusters need to be popped of and unscrewed. Remove multiple torx screws from within the wheel arch thus allowing the fabric inner to be peeled back, more torx screws can be found behind the fabric remove these to detach the bumper from the body. Carefully pop each side of the bumper from its push fixings and remove rearward to a point where the and electrical connector can be accessed and unclipped. Store bumper safely.
3. **Remove crash beam** – to remove crash beam, un-bolt 8 bolts then lift and remove beam, hand this back to the customer, put bolts back into holes to help prevent corrosion of the threads.
4. **Installing towbar** - Insert caged nuts into the sidearms **B**. (Use cage nut installation guide to assist with fitment). Loosely attach sidearms to the existing mounting points inside the chassis using fixtures **E**, (Covering tape may have to be removed) **(If chassis length is greater than 1035mm use 2 sets of sidearms acting as spacers)**  
Attach Cross Bar **A** using fixtures **F** to the upper set of holes on the sidearm. If detachable option was chosen fit the housing before bumper refit.  
**Fully tighten bolts to recommended torque settings.**
5. **Refit Bumper** – this is easier done with the neck option un-attached
6. Please refer to neck fitting instruction for fitting the neck – enlarging the existing aperture on certain models will improve access to neck bolts, on certain models a bumper cut will be required, see fig 1 as a guide only.
7. Please refer to the vehicle specification for the trailer weight and nose limits, which **must be observed**.

**Recommended torque settings: M12 - 95 Nm, M16 - 214 Nm**

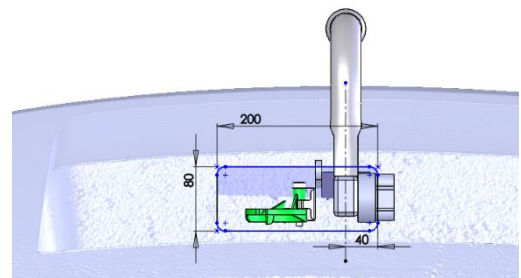
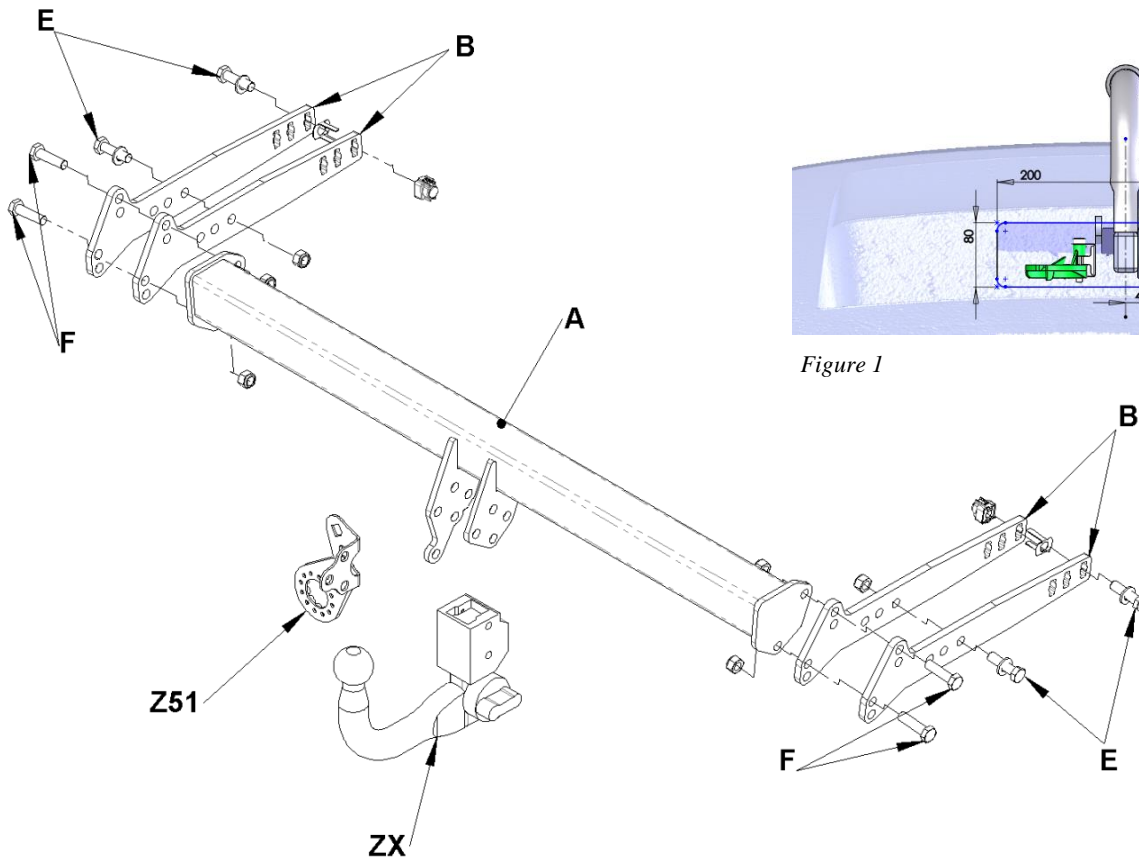


Figure 1