



Fitting Instructions

TOWBAR SU23A

For SUBARU OUTBACK ESTATE
and LEGACY ESTATE 2.5L with SELF
LEVELLING (1996-)

MATERIALS

A	1	Towbar Mainframe
C	1	Centre Tube with European facing to 94-20-EC
D	6	M12 x 35 x 1.25mm Bolts, Lock Washers and Large Flat Washers (30mm O.D.)
E	4	M8 x 25x 1.25mm Bolts, Nuts, Lock Washers and Flat Washers (20mm O.D.)
F	2	M16 x 50 x 2.00mm Bolt, Nuts and Lock Washers
CB	2	M16 x 50 x 2.00mm Coupling Bolts, Nuts and Lock Washers
Z	1	ZEP35 Electrical plate (not shown)

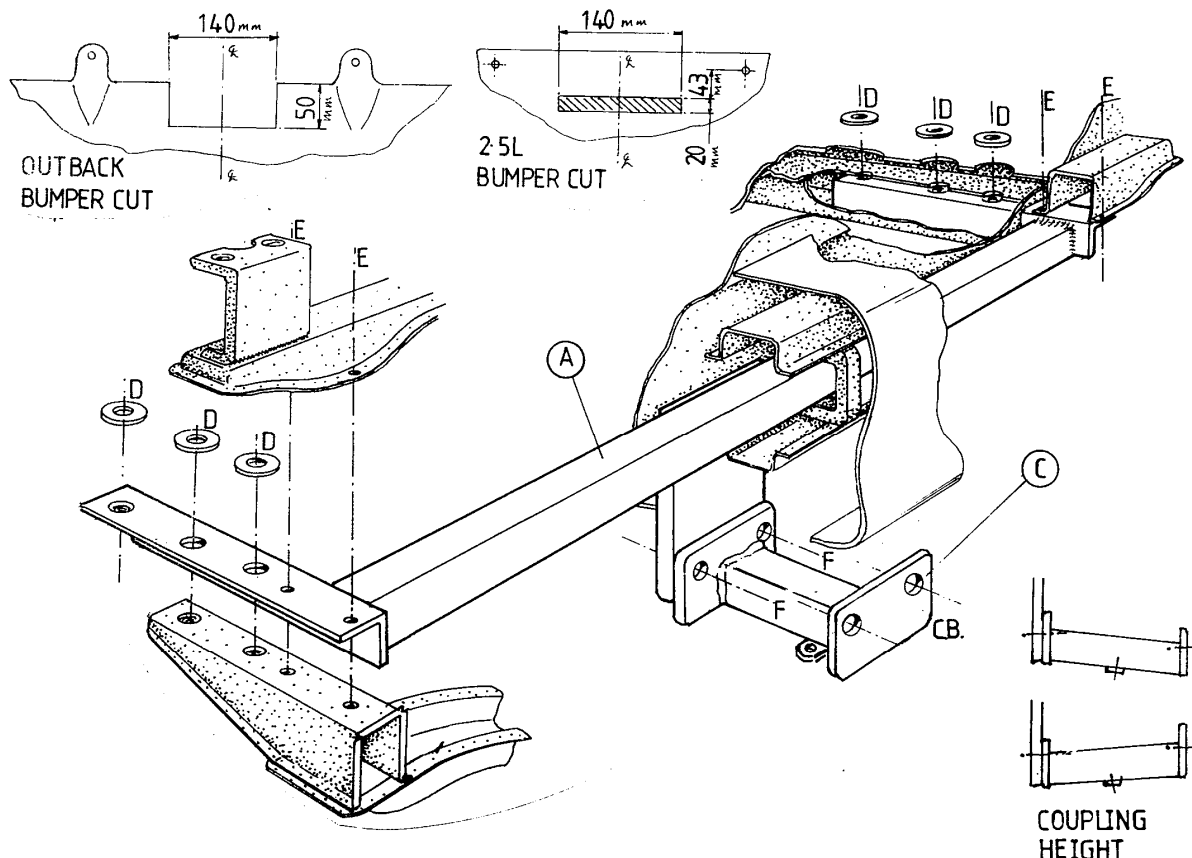
FITTING

1. Remove bumper from vehicle (2 vertical bolts inside boot on each side under plastic grommets, 1 tip bolt each side on top corner, 4 plastic screws/clips on bottom edge of bumper). Cut bumper as shown on 1998-on models.
2. Remove plastic bumper skin from steel frame (Pre 1998 Models, 12 plastic screws/clips on top edge and 5 on bottom edge. 1998 Models on, 5 plastic plugs on top edge, 2 on bottom edge).
3. Remove and discard 2 x M8 bolts on each side of the top edge of steel bumper shell, (From 1998 Models the steel bumper shell is spot welded. Drill out the spot welds on the cross hairs marked), insert and sandwich Towbar Mainframe (A) in between top and bottom flanges of bumper shell and fix using longer Bolts (E), as shown. Refit plastic bumper skin.
4. Insert towbar into vehicle chassis and attach using Bolts (D) with large flat washers.
5. Loosely attach Centre Tube (C) to Towbar Mainframe (A) using Bolts (F). **Note: Centre Tube (C) can be fitted to give two coupling heights** (see diagram). Finally tighten all bolts.

Note: This towbar must be used with either a Witter Towball (part number Z1) or Class A50-1 or A50-X towball dimensionally Conforming to A50-1 with a 'D' and 'S' value greater than or equal to that of the towbar.

Please refer to the vehicle specification for the trailer weight and nose limits, which **must be observed**.

Recommended torque settings: M8 - 27Nm, M10 - 53 Nm, M12 - 95 Nm, M14 - 150 Nm, M16 - 214 Nm



W0001SU23A-FIT\$010802220000