



Fitting Instructions

TOWBAR SU31U
For Subaru Forester For
2008- SU31Q

MATERIALS

A	1	Cross Bar
D	1	Left Side-arm
E	1	Right Side-arm
F	4	M12 x 35 x 1.75 Bolts, Nuts, Lock Washers and Flat Washers.
G	6	M12 x 35 x 1.75 Bolts, Lock Washers and 4 Flat Washers (30mm O.D) 2 Flat Washers (40mm O.D).
H	1	M8 x 25 x 1.25 Bolt, Neoprene Washer and Nyloc Nut.
ZE	1	Electrical Plate ZEP5
ZQ	1	Detachable Neck (ZQ4101)
X	6	Existing M10 Nuts

FITTING

1. Remove bumper, 1 off push clip in top corner of each wheel arch, 6 off push clips along bottom edge and 1 off screw in boot opening below light cluster. Disconnect reversing sensors.
2. Remove crash beam and retain 6 off fixings for fitting of side-arms. Hand beam to end user for re-fitting if bar is removed.
3. Lower exhaust boxes and remove grommets from bottom face of chassis.
4. Insert side-arms (D) and (E) into chassis rails and secure to chassis using fixings (G) (ensure correct positioning of washers) and back panel using fixings (X). Note: It is advisable to use a thread lock agent on these fixings.
5. Attach crossbar (A) to side-arms using fixings (F). Tighten all fixings.
6. Attach Electrical plate (ZE) using fixing (H).
7. Attach detachable neck housing as per separate instruction.
8. Cut bumper and re-fit. If electrical plate is used as a flip up system then an additional cut may be required.

Note:

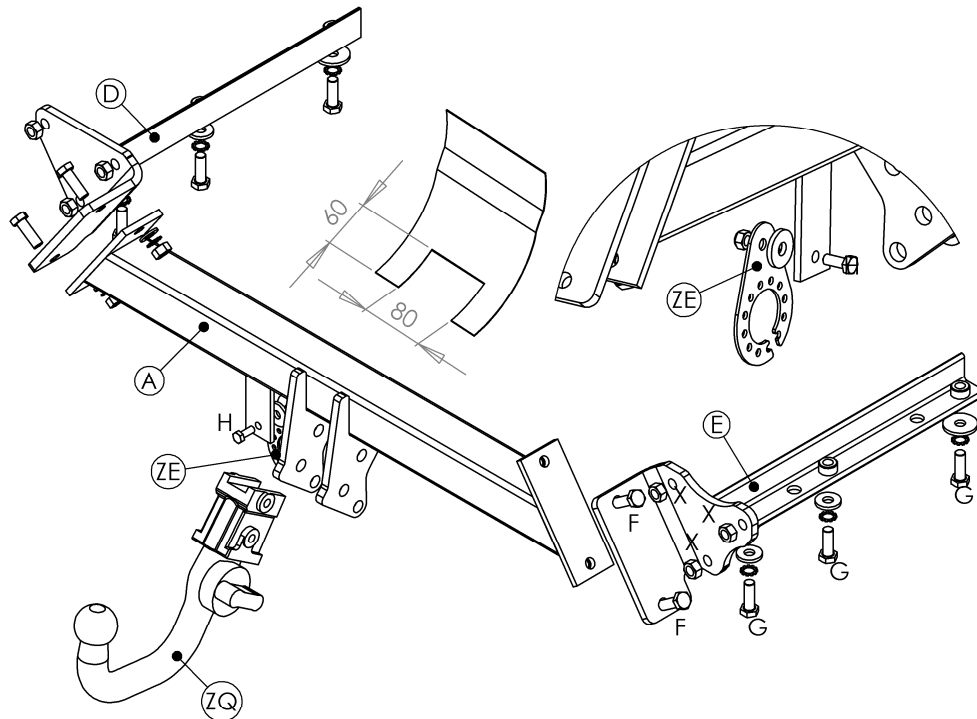
For use with either

SU31Q Detachable neck option – ZQ4101. Please refer to ZQ fitting instructions for installation

Please refer to the vehicle specification for the trailer weight and nose limits, which **must be observed**.

Recommended torque settings: M8 - 27Nm, M10 - 53 Nm, M12 - 95 Nm, M14 - 150 Nm, M16 - 214 Nm

Grade 10.9: M12 – 139Nm, M10 – 78Nm



FI



W0001SU31U-FIT\$01110520000