



Fitting Instructions

TOWBAR **VW62U**
For VW Tiguan **For**
2008- **VW62Q**
VW62

MATERIALS

A	1	Cross Bar
B	2	Sidearms
D	4	M12 x 40 Bolts, Lock Washers and Ø30 Flat Washers
F	6	M12 x 40 Bolts, Nuts, Lock Washers and Ø30 Flat Washers
G	1	M8 x 25 Bolt, Nyloc Nut and Ø35 Neoprene Washer
H	4	M12 Square nuts and Cage Nut housing
ZE	1	Electrical Plate (ZEP4)
ZP	1	Electrical Plate Angle Bracket (ZEQ5)

For use with

VW62 fixed neck option ZF3020. *Note: This towbar must be used with either a Witter Towball (part number Z11 or Class A50-1 or A50-X towball dimensionally conforming to A50-1 with a 'D' and 'S' value greater than or equal to that of the towbar.*

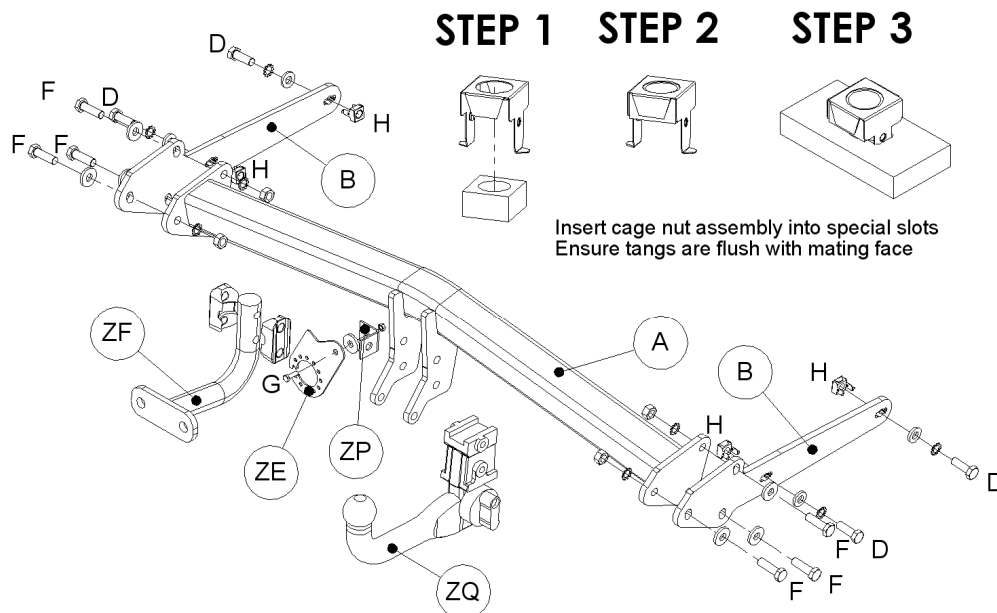
VW62Q Detachable neck option ZQ3020. Please refer to ZQ fitting instructions for installation.

FITTING

1. Remove rear light clusters – Torx screws and lock screw (turn anti-clockwise 90° to unlock) and slide rearwards
2. Remove Bumper: Torx screws beneath light clusters and inside wheel arches. Pull back arch liner and unclip arch trim each side. Remove plastic clips at each bumper tip and remove lower bumper retaining screws. Remove number plate top reveal two fixing screws. Disconnect wiring loom and unclip bumper and store carefully.
3. Remove crash beam and refit bolts to prevent water ingress.
4. Assemble Cage nuts (**H**) and press into slots in sidearms (**B**). Loosely fix sidearms inside chassis rails using bolts (**D**).
5. Loosely attach crosstube (**A**) to Sidearms (**B**) using fixings (**F**).
6. Fix neck as per instructions on additional sheet using Bolts (**X**), noting the position of Angle Bracket (**ZP**).
7. Tighten all bolts to required torque as detailed below, and refit crash beam mounting bolts to prevent water ingress.
8. If a retractable electrical plate is required, tighten Bolt (**G**) until the plate can be retracted by hand.
9. Cut bumper along panel lines, note that replacement lower bumper panels are available separately from a VW dealer if a removable panel is required
10. Refit bumper, re fitment is the reversal of removal

Please refer to the vehicle specification for the trailer weight and nose limits, which **must be observed**.

Recommended torque settings: M12 – 80Nm - M12 -139Nm (10.9 Grade)



W0001VW62U-FIT\$020806230000



Special cage nut installation guide

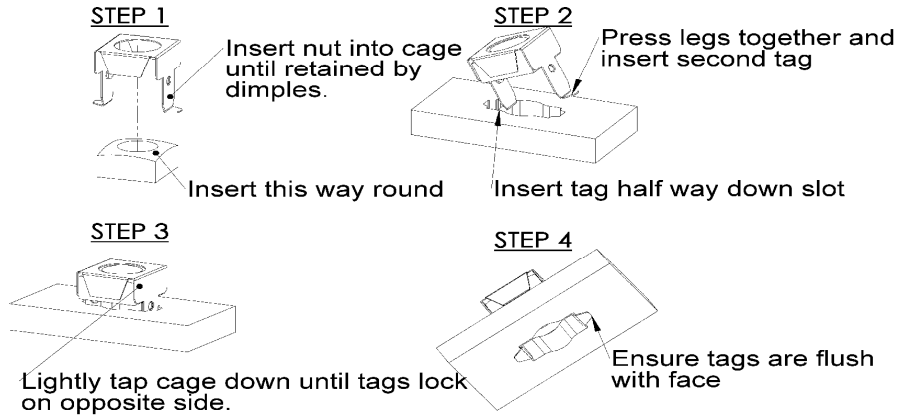
Caution: The special cage nut retainers are designed to fail if over tightened, protecting threaded nut from damage.

DO NOT OVER TIGHTEN –M12 BOLTS (8.8)= 80Nm, M10 BOLTS (10.9) = 70Nm.

Inserting Caged Nut into open hole (e.g. sidearm)

CAUTION: The special cage nut retainers are designed to fail if over torqued, protecting threaded nut from damage.
Do not use this feature as a measure of torque, always use a torque wrench.

DO NOT OVER TORQUE - M12 BOLTS =80Nm, M10 BOLTS (10.9)=70Nm



Inserting Caged Nut into closed hole (e.g. end of cross tube)

